

Centralized health management registers for Finnish cattle and swine herds Sikava and Naseva

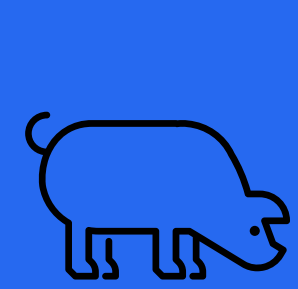
Toppari Ina¹, Talvitie Vera¹ and Tuunainen Erja¹.
¹Animal Health ETT, Finland, email: ina.toppari@ett.fi

Animal Health ETT coordinates swine and cattle health management by administrating registers Sikava and Naseva. The registers are founded in 2003 and 2005, respectively, to follow up national goals for animal health and welfare. The national goals are set by cooperation with ETT, authorities, farmer´s associations, veterinarians, and other stakeholders.



Animal Health ETT

NGO association maintained by slaughterhouses, dairies, and egg packing companies

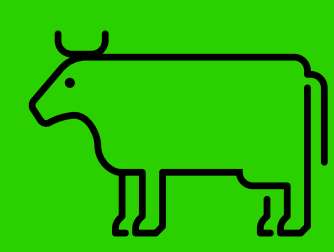


ETT
SIKAVA

- A health classification register for pig farms
- Founded in order to replace the separate health classification systems run by different slaughterhouse companies to build up one voluntary national register
- The idea of the classification system is to indicate the quality criteria for production

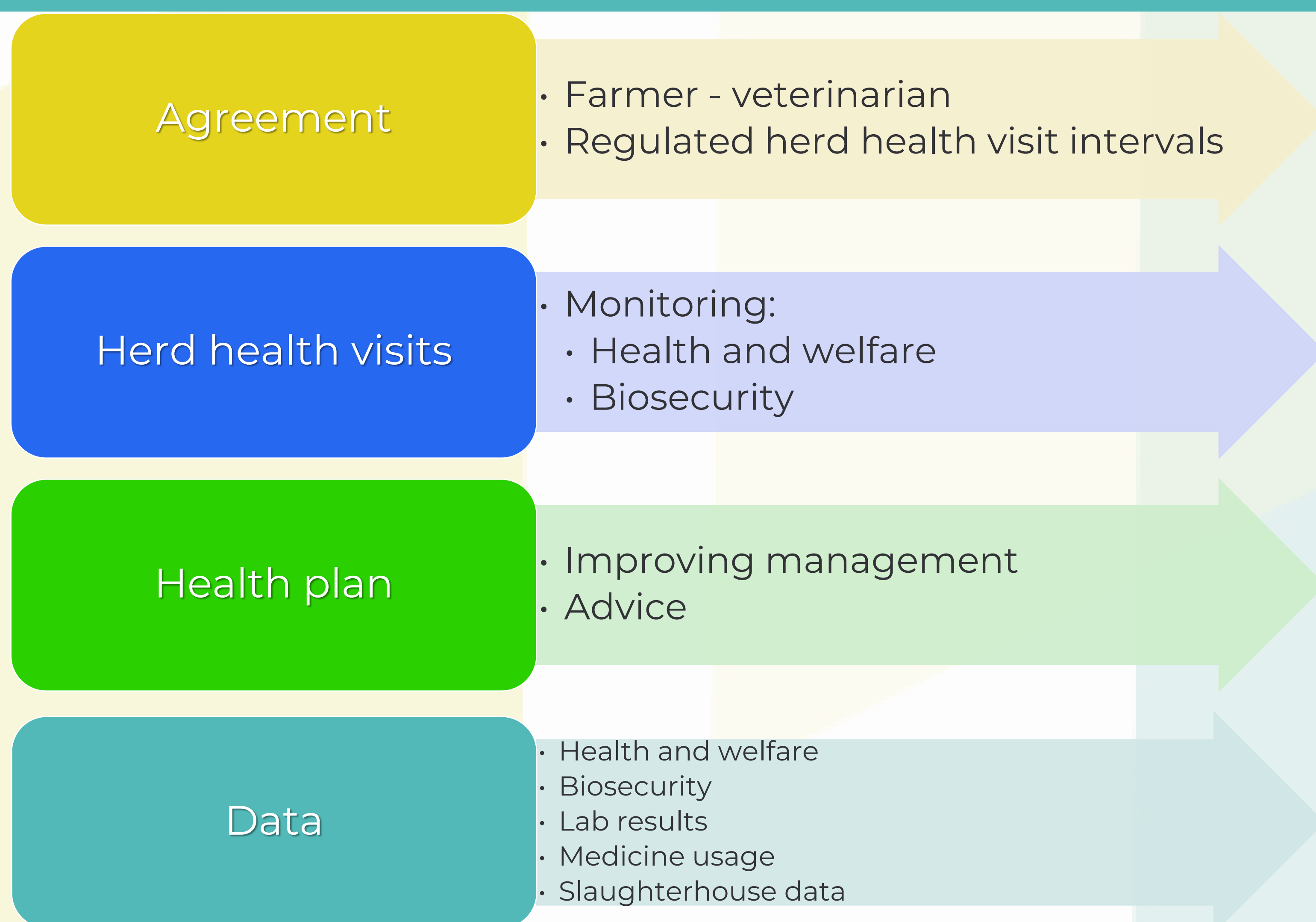


ETT
NASEVA



- A centralized Health Care Register for cattle herds
- Founded to follow up national goals for animal health and welfare.
- Naseva´s comprehensive data collection can be used for securing animal transport from farm to farm and indicating quality of production

Sikava and Naseva health management in brief:



Herd health management is based on an agreement between a veterinarian and a farmer, health plan, regular herd visits by veterinarian and data collection into registers. Several observations of health, welfare and biosecurity are made by veterinarians during visits. Animal welfare is observed using principles of Welfare Quality[®]. Biosecurity is evaluated by Biocheck.UGent[®] scoring system among other tools.

Registers have interfaces to other databases and different software. The data is available for the farmer, herd veterinarian as well as for the slaughterhouse/dairy company.

Results

The coverage of Sikava and Naseva registers is nearly 100 % of Finnish commercial production. There has been a significant improvement in the amount of holdings having medication data in the register.

Conclusions and discussion

The usage of antimicrobials can be monitored in the registers. Connection between registers and veterinary software is important because veterinarians sell most of the medicines to the farms (without profit).

It´s not easy to reach full coverage of medication data when the farmer is responsible for the recordings. To improve the quality of the data, there is a new interface to get sales data automatically from veterinary software.

Several graphs describing the usage of antimicrobials are under development in both registers. This could motivate farmers and veterinarians to record medications more actively.

The collection of comprehensive data is essential for comparison of antibiotic usage data, for identifying national reference values and for recognition of different development areas. Standardized methods are needed to enable comparison between countries.

We acknowledge Ministry of Agriculture and Forestry of Finland for contributing funding of "Food Chain Project 3 - National Quality Systems as part of a sustainable food system"



Ministry of Agriculture and Forestry of Finland



References:

Animal Health ETT (www.ett.fi)
Naseva – Centralized Health Care Register for Finnish Cattle Herds (www.naseva.fi)
Sikava – Health Classification Register for Swine Farms (www.sikava.fi)